



8000 series

Pocket-size Mobile Computer

The power to keep business moving—right in the hands of the people that need it most in retail, healthcare, field sales, or warehousing.

Hard-working 8000 Series mobile computers provide the power of modern data management—easy scanning, accurate data capture and entry—in one efficient, cost-effective solution.

8000 series

Pocket-size Mobile Computer



Stay in front of the customer and ahead of the competition

CipherLab 8000 terminals are a hard-working partner for busy workers in virtually every retail environment, from grocery and convenience stores to specialty and department stores.

The 8000 mobile computers combine easy scanning, accurate data capture, long working hours, and powerful options in one compact handheld. With efficient data capture and control, shelves stay fully stocked and merchandise moving. Sales staff spend less time fussing with details and more time creating customer satisfaction and revenue.

Handy 8000's add robust performance and flexible functionality to fast-moving companies that recognize the value of data management.

- ▶ **Speed ordering, restocking, pricing, and order fulfillment**
- ▶ **Automate repetitive tasks for increased worker performance**
- ▶ **Improve customer satisfaction through enhanced data access**
- ▶ **Empower lead management and contact updates**
- ▶ **Tighten scheduling, order and delivery tracking**
- ▶ **Streamline operations using vertical-niche applications**

Smart solutions with immediate payoffs

Increase sales productivity

C.G Sparks, Salt Lake City, Utah, needed a flexible inventory management system equally adept at managing its ever-changing stock of one-of-a-kind Indian and Tibetan antiques, as well as its proprietary furniture line.

The company combined Furniture Wizard software with CipherLab's 8061 mobile computers, enabling staff to price and label items on the sales floor, resolve customer service questions, and keep track of inventory and special orders. The wireless 8061 allows a salesperson to check available stock, fabrics, and colors without leaving the customer's side. The solution has created immediate profits, with more efficient inventory management, increased sales and higher customer satisfaction.

Optimize shelf space and order accuracy

Headquartered in Alabama, AG South is one of the oldest wholesale grocery store cooperatives in the U.S., handling more than 16,000 SKUs.

Implementing CipherLab terminals in 300 large grocery stores for order entry will save more than \$2 million annually by eliminating out-of-stock and duplicate orders and by streamlining the ordering process to ensure shelves are promptly stocked with fast-moving food items.

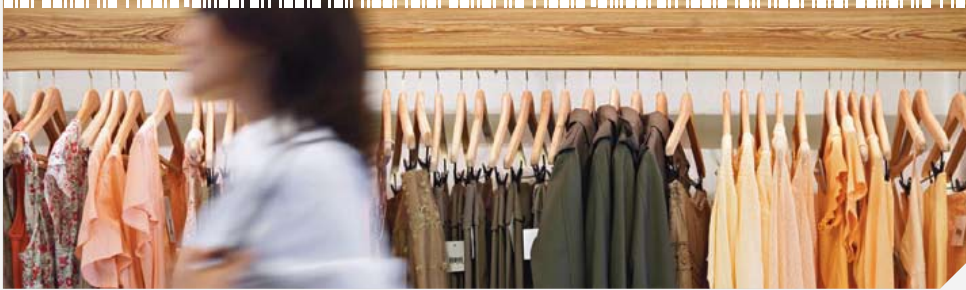
Streamline production and ensure quality control

The world's largest manufacturer of automotive systems and components, Delphi U.K., selected 8001 mobile computers to streamline plant operations, ensure quality goals, and provide product tracking.

Employees initiate their shift by scanning their identity badges. As parts leave the production line, two barcodes are scanned: one on each unit and an Odette label barcode on the pallet. At the end of each shift, data is batch uploaded to a central computer, enabling Delphi to identify the date and time of manufacture, the operator and the machine producing each product. Now the company can immediately track any problem back to its source, reinforcing its quality brand image.

8000 series

Pocket-size Mobile Computer



Ensuring healthy accuracy

The CipherLab 8000 Series helps healthcare professionals achieve greater precision and responsiveness. The compact design and backlit LCD screen make it a favorite among multi-tasking hospital and laboratory personnel to quickly enhance communication between doctors, nurses, labs, and pharmacies for greater efficiency, fewer errors, and enhanced patient and employee satisfaction.

Key link in the supply chain

Improve speed and accuracy of supply chain functions, including picking and packing, route assignment, paperless accounting, and batch/wireless ordering and reporting. The easy-to-learn interface combined with long working hours get the job done for logistics personnel who have to maintain communication from the loading dock to the front office.



A small computer with enormous benefits

MASTER EVERY DETAIL

Versatile 8000 Series mobile computers improve business-critical operations by combining scanning and data entry in one compact lightweight handheld with a user-friendly interface and easy-to-read backlit LCD screen.

ALWAYS READY FOR OVERTIME

Highly efficient circuit design enables up to 100 continuous hours on AAA-size alkaline or lithium-ion rechargeable batteries. A backup rechargeable lithium battery prevents data loss if you can't change or charge the battery immediately.

POWER WHERE YOU NEED IT

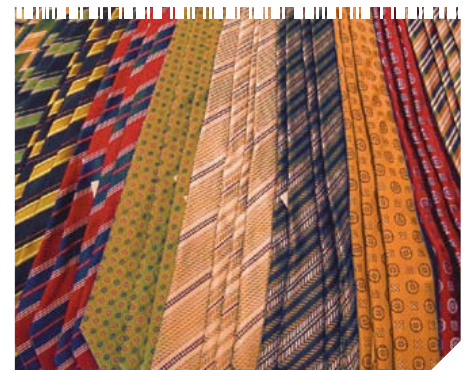
Running on a 16-bit CMOS low-power-consumption CPU, 8000 Series mobile computers come with 2MB program memory and 2MB data memory for robust data manipulation and storage.

READ NOW—KNOW NOW

With a choice of linear imager or laser reader, the 8000 Series meets most barcode scanning needs. Wireless Bluetooth and 802.11b/g Wi-Fi options enable real-time data transmission, even by mobile phone, easy label printing, and streamlined communication throughout your entire facility.

WORKS WITH YOUR CRITICAL APPLICATIONS

The CipherLab operating system supports a wide variety of C and BASIC solutions from batch to wireless connectivity. Custom applications are easily accommodated using proven CipherLab libraries and/or a Windows-based applications generator.



CIPHERLAB PRODUCTS ARE
VALUED WORLDWIDE FOR
ENGINEERING EXCELLENCE.

THE 8000 SERIES

IS ANOTHER EXAMPLE OF
TECHNICAL INNOVATION AND
QUALITY VALUE FOR TODAY'S
AIDC SOLUTIONS.

SPECIFICATIONS

8000 series

Pocket-size Mobile Computer



| | | 8000 | 8001 | 8061 | 8071 |
|--|---|---|--|---|------------------|
| Wireless Communication | Options | Batch | | Bluetooth | Wi-Fi |
| | Specifications | Infrared | | BT Class 1 | 802.11b/g |
| | Coverage line of sight | Typically 30 cm / 12 in. | | 250 m / 820 ft. | 350 m / 1148 ft. |
| Power | Operation battery | 2 AAA alkaline | Li-ion 3.7 V 700 mAh | | |
| | Backup battery | Rechargeable lithium 3.0 V, 7.0 mAh | | | |
| | Working time laser, one scan per five seconds | 100 hours | | 36 hours | 22 hours |
| | Data retention | 30 days | | | |
| General Characteristics | CPU | 16-bit CMOS, low power consumption | | | |
| | Program memory | 2MB flash memory | | | |
| | Data memory | 2MB SRAM | | | |
| | Display | LCD 100 x 64 with LED backlight | | | |
| | Keypad | 21 rubber keys with LED backlight | | | |
| | Buzzer | Programmable, 1 KHz to 4 KHz | | | |
| | LED | Dual color: red and green | | | |
| Dimensions | Size L x W x H | 122 x 56 x 23 mm 4.8 x 2.2 x 0.9 in. | 122 x 56 x 32 mm 4.8 x 2.2 x 1.25 in. | 143 x 57 x 35 mm 5.6 x 2.25 x 1.4 in. | |
| | Weight laser including battery | 123 g / 4.4 oz. | 120 g / 4.2 oz. | 125 g / 4.4 oz. | 166 g / 5.9 oz. |
| Scanner | Light source | Linear imager: 650 nm red LED / Laser: visible laser diode | | | |
| | Scan rate | Linear imager/Laser: 100 scans per second | | | |
| | Scan angle | Laser: 47° | | | |
| | Reading range | Linear imager: 3 to 29 cm / 1.2 to 11.4 in. Laser: 1 to 45 cm / 0.4 to 1.5 ft. dependent on barcode resolution | | | |
| Environmental | Operating temperature | -10°C to 60°C / 14°F to 140°F | | | |
| | Storage temperature | -20°C to 70°C / -4°F to 158°F | | | |
| | Humidity | Operating: non-condensed 10% to 90% / Storage: 5% to 95% | | | |
| | Impact resistance | 1.2 meter / 4 ft. drops onto concrete, 5 drops per 6 sides | | | |
| | Electrostatic discharge | ± 15 kV air discharge, ± 8 kV direct discharge | | | |
| | EMC regulation | FCC, CE, and C-Tick approved | | FCC, CE, C-Tick, DGT, BSMI, TELEC, MIC | |
| Programming | C, Basic, and Windows-based applications generator | | | | |
| Accessories | Charging & communication cradle (serial & USB), Modem cradle (56K), Ethernet cradle (10/100 BaseT), Battery gang charger | | | | |
| Acoustic Coupler 8020/8021 available in US | Data rate/format: 1200, O/E/N, 7/8, 1/2 stop bits Sound frequency: 1.2 KHz ± 5%, 2.2 KHz ± 5% Modulation type: Bell202/FSK | | | | |
| Warranty | 1 year | | | | |

ACCESSORIES



Communications Cradle



Charging and Communications Cradle



56 Kbps Modem
10/100 Mbps Ethernet Cradle



Battery Gang Charger



DIN EN ISO 9001

©2008 CipherLab Co., Ltd. All specifications are subject to change without notice. All rights reserved. All trademarks and trade names are those of their respective owners.



HEADQUARTERS
CipherLab Co., Ltd.
12F, 333 Dunhua S. Rd., Sec. 2
Taipei, Taiwan 106
Tel +886 2 8647 1166
Fax +886 2 8732 3300
www.cipherlab.com

CipherLab China
Suite 1305, 1065A, Jaojiabang Rd.
Xuhui District, Shanghai,
China 200030
Tel +86 21 3368 0288
Fax +86 21 3368 0286

CipherLab USA
2552 Summit Avenue
Plano, Texas USA 75074
Tel +1 469 241 9779
Toll Free 888 300 9779
Fax +1 469 241 0697

CipherLab EMEA
Airedale House
Clayton Wood Rise
Leeds, LS16 6RF, UK
Tel +44 113 274 7823
Fax +44 113 274 7822

CipherLab Central Europe
Willicher Damm 143-145
41066 Mönchengladbach
Germany
Tel +49 2161 56230 0
Fax +49 2161 56230 22